



# Census of Marine Life Education and Outreach Network

**November 5, 2008**

## In This Issue

[New Census Web Portal](#)

[E & O Collaboration](#)

[Census Newsletters](#)

[Mislabeled Fish](#)

[Oceans Film](#)

[POST Executive Director](#)

[ArcOD Art Show](#)

[Smithsonian Ocean Hall](#)

[Pollutants in  
Cephalopods](#)

[Leatherback  
"Swimways"](#)

[Marine Biodiversity](#)

[IPY Stamp](#)

[Ocean Yearbook](#)

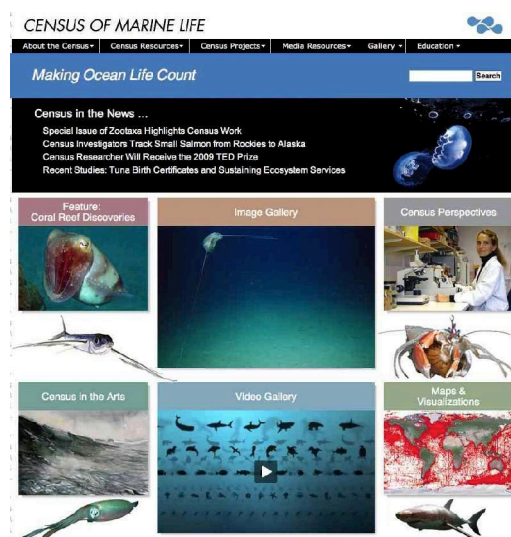
[ChEss Funding  
Opportunity](#)

[Deeper Than Light](#)

[Ocean Atlas](#)

## New Census Internet Portal Goes Live

The new and improved web portal of the Census is up and running. This new version features an update of existing tools and resources as well as many new additions. New and powerful photo and video galleries prominently display the wealth of imagery produced by our Census community, while the Census in the Arts highlights how Census work has inspired artistic endeavors. Census perspectives features essays, speeches, interviews and conversations that discuss the Census, its history, and its future. Updated to international website navigation standards, this revised portal is available at [www.coml.org](http://www.coml.org).



## Census Groups Recognized for Effective Science Communication and Collaboration



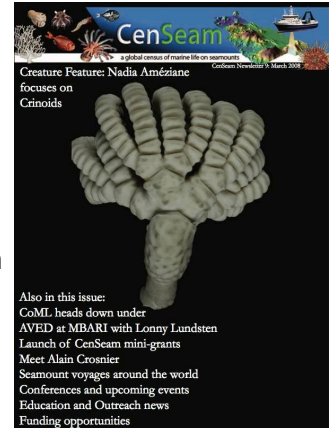
At the SCAR Conference in St. Petersburg in July a group of institutions, which included the Census E & O Team and CAML, was recognized for their cooperation and communication during the Nov 2006-Feb 2007 Polarstern expedition to the Larsen-Ice Shelf.

Cooperation between the two Census Groups, the Alfred Wegener Institute for Polar and Marine Research, International Polar Foundation, and The Cousteau Society resulted in a high media response, with 31 news agencies reporting the expedition results, 28 contributions to radio and television, 141 articles appearing in newspapers, and more than 360 articles published online in 33 countries and 9 languages.

### Latest Newsletters available from Census Partners

CenSeam, U.S. CoML, HMAP, GoMA, Gulf of Mexico, and the Encyclopedia of Life have all recently released new issues of their newsletters.

CenSeam's E-News features an article on Deepsea coral symposium 2008 and advertisements of vacancies in the research group "Geomicrobiology and Biosignatures in the Deep Biosphere" at the University of Gottingen. Please contact [Mireille Consalvey](#) for more information.



The U.S. CoML newsletter features the Census year in review, an interview with Bob Gagolian, and the video of the quarter, among other stories and is available online: [U.S. CoML Newsletter](#).

HMAP has released its first newsletter which features stories on Humpback whaling, videos that are available on their website, and a soon to be published book on Dutch Herring. This newsletter is available by email. Please contact [Kira Pravato](#) for more information.

The Gulf of Maine Area project has also recently distributed the latest issue of their [newsletter](#). This issue features news on their synthesis plan, upcoming events, and recent publications.

A recent newsletter from our Gulf of Mexico affiliate features new publications, an interview with their new executive director Larry McKinney, and an update on their summer high school internship program. For more information please access [HRI News](#) online.

Finally, the Encyclopedia of Life, a Census affiliate, has released its second issue of [EOLetter](#), their quarterly newsletter which features a media spotlight, technology news, scientist biographies, and a link to their annual report.

### Census Aids Students' Investigation of Mislabeled Fish

Two New York City high school friends, curious about new DNA barcoding

Some fish sold in New York City are mislabeled as more expensive varieties

Sold as:

DNA ID:

technology, discovered that fish at local stores and restaurants are commonly mislabeled and sold for far more than regular market price. The

White (Albacore) Tuna  
\$8.50/lb wholesale



Photo FishBase M Bariche

Mozambique Tilapia  
\$1.70/lb wholesale



Photo FishBase B Gratwicke

Trinity School students collected 60 fish samples from 14 stores and restaurants in Upper Manhattan in New York City. The girls sent the samples to Canada's University of Guelph Biodiversity Institute of Ontario to obtain their genetic barcodes. A quarter (14 of 56) of the usable samples were mislabeled- in all cases as higher-priced or more desirable fish species. The students' report marks the first marketplace application of the four year old DNA barcoding technology. For more information, see the [news release](#) or [media coverage](#).

### French Newspaper Highlights Galatee's "Oceans"



The French newspaper [Le Monde](#) recently featured an article and interview about the technical and scientific process of the film "Oceans", by Jacques Perrin and Galatee films. Written by Dominique de Saint Pern, the [article](#) (English trans) and [interview](#) (English trans) discuss the filmmaking innovations and new technologies that have been employed by Galatee's crew in capturing the true essence of the ocean and ocean life. Census researchers have assisted with this project since its inception, and after five years in production, the projected release date for Perrin's latest creation is fall 2009. Please visit the film's website for more information: [Oceans](#).

### New Executive Director for POST



#### PACIFIC OCEAN SHELF TRACKING PROJECT

In August, POST appointed Jim Bolger as their new Executive Director. Jim comes to POST from a background in Oceanography and having worked for Washington Sea Grant, Monterey Bay Aquarium, and local government in Washington State. As the Executive Director of the Pacific Ocean Shelf Tracking (POST) Project, Jim is responsible for the day to day management of the program, including planning, administrative oversight and staff supervision. Working closely with the Management Board, he and the other staff are responsible for

implementation of the program's many activities and initiatives. [More information](#).

### ArcOD Images Featured in Art Show

A recent artshow at the well-known [Wells Street Art Company](#) gallery in Fairbanks, Alaska, has featured nineteen color prints of Arctic fauna by ArcOD researchers Kevin Raskoff, Russ Hopcroft, Rolf Gradinger, Shawn Harper, and Bodil Bluhm. Also to be featured are a range of paintings by local painter Sue Farnham, including the one above entitled "Pancake ice and Arctic cod". The show opened on October 3rd with all the photographers (except Harper) and Sue Farnham present at the opening ceremony. More information and galleries of the photos and paintings are available on the [First Friday](#) press release page.

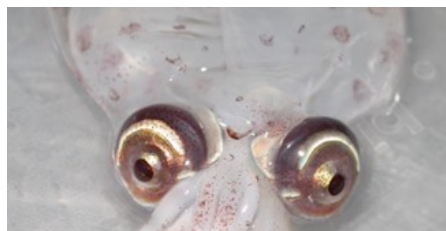


### Census Photos Displayed in Smithsonian Ocean Hall

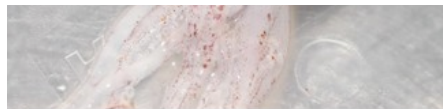
The new Smithsonian Ocean Hall features photos from the Hidden Ocean 2005 Cruise in the "Going to Sea" exhibit. This display explores the themes of human exploration, scientific discovery, and oceangoing traditions. Included are photographs by Russ Hopcroft, Bodil Bluhm, and Kevin Raskoff as well as others. The grand opening of the new Sant Ocean Hall was Saturday September 27th, 2008. For more information about this exhibit visit the [Going to Sea](#) page on the [Sant Ocean Hall](#) website.



### Pollutants Found in Deep Sea Cephalopods



In a new publication in *Marine Pollution Bulletin* (Vol 56, Iss 8), Census researcher Michael Vecchione describes the presence of chemical contaminants in nine different species of cephalopods (including octopods, squids,



cuttlefishes and nautilus) which were collected during a joint investigation of Bear Seamount by GoMA and MAR-ECO

researchers. The chemicals found, known as persistent organic pollutants (POP's), were found in specimens collected at a depth of 3,000 feet. These results provide evidence that these pollutants, which bio-accumulate as they flow through tropic webs, are reaching even very remote locations in the open ocean. This article is available online at [Science Direct](#).

### "Swimways" for Endangered Leatherbacks



TOPP researchers have contributed to work resulting in a resolution issued by the The International Union for the Conservation of Nature (IUCN) urging nations to protect leatherback sea turtles and sharks from the world's industrial fisheries. More than 8,000 scientists, government officials and environmental organizations from

over 250 nations are supporting the resolution, which would create marine protected areas and "swimways" along the Pacific leatherback's migratory routes. For more information the [Resolution](#) is available online.

### New Marine Biodiversity Journal, Call for Papers


Census researchers have been instrumental in the launch of a new journal entitled "Marine Biodiversity". This journal focuses on all aspects of biodiversity research within marine ecosystems. Original papers and review articles are welcomed, with submissions accepted electronically through the journal's webpage. Manuscripts accepted during the following months will appear in the first issue, scheduled for release in March 2009. For more information on contributing, please visit the [Submissions](#) page.



### IPY Stamp is Now Available



CAML researchers have contributed to Australia Post's new Australian Antarctic Territory stamp issue. The stamp celebrates the successful fieldwork done in Antarctica during the 2007-08 International Polar Year. The stamp image, which was taken by

 ArcOD researcher Russ Hopcroft, features a pteropod snail, *Limacina helicina*, which is present in the waters of both the Arctic and Antarctic. Please visit the Australia Post website on the [IPY Stamp Issue](#) for more information or to purchase stamps.

### Ocean Yearbook - Call for Paper Submissions

The 24th volume of the Ocean Yearbook has released a call for submissions. All articles on issues and prospects, ocean governance, living resources of the ocean, non-living ocean resources, transportation and communications, environment and coastal management, maritime security, military activities, regional developments, training and education, and ocean polar issues will be considered. For more information please access the [Call for Papers](#) online.



### ChEss Funding Opportunity - Call for Proposals

ChEss has



released a call for proposals for a series of mini-grants for ChEss synthesis related activity. Applications are currently being accepted and considered for such activity as: cruise participation, sample processing, student exchanges, synthesis workshops, and outreach activities, among others. Additional information is available on the front page of the [ChEss Website](#).

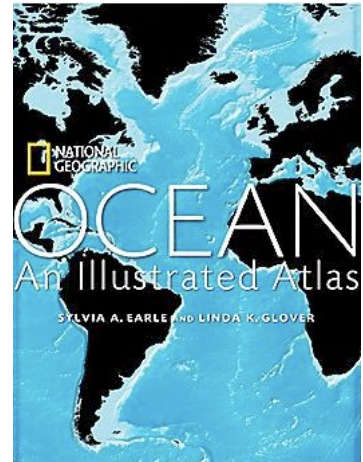
### Valencia Opening of Deeper Than Light

MAR-ECO invites the Census Community to attend the Valencia, Spain opening of the Deeper Than Light exhibition on Monday November 10, 2008. This international traveling exhibition was produced by MAR-ECO and the Bergen Museum in Norway and features displays deep sea life in a unique interaction of art, science, and technology. For more information on this exhibit please visit the [Exhibition](#) page of MAR-ECO's website.



### New National Geographic Ocean Atlas Released

A new book "Ocean, An Illustrated Atlas" written by Sylvia A. Earle and Linda K. Glover and published by National Geographic is now available. This 320-page book contains an Essay on the Census of Marine Life by Fred Grassle and Edward Vanden Berghe and features special maps prepared in collaboration with Pat Halpin and the Mapping & Visualization team. This volume is available online through [National Geographic](#).



*The Census of Marine Life is a global network of researchers in more than 80 nations engaged in a 10-year scientific initiative to assess and explain the diversity, distribution, and abundance of life in the oceans. The world's first comprehensive Census of Marine Life-past, present, and future-will be released in 2010. [www.coml.org](http://www.coml.org)*

#### [Forward email](#)

#### [SafeUnsubscribe®](#)

This email was sent to [jmharding@gso.uri.edu](mailto:jmharding@gso.uri.edu) by [jmharding@gso.uri.edu](mailto:jmharding@gso.uri.edu).  
[Update Profile/Email Address](#) | Instant removal with [SafeUnsubscribe™](#) | [Privacy Policy](#).

Email Marketing by



Census of Marine Life | Office of Marine Programs | University of Rhode Island, Graduate School of Oceanography | Narragansett | RI | 02882